

**BEAVER COUNTY,  
PENNSYLVANIA**  
COMMUNITY PROFILE



**Fair Shake<sup>®</sup>**  
Environmental Legal Services

# HISTORY

Beaver County was established in 1800 and made up of many small municipalities (Beaver County, Pennsylvania, n.d.).

The county had a small population for the first fifty years after it was established, but began to grow in the 1850s when railroads were built in the county (Beaver County, Pennsylvania, n.d.).



Read more about the history of Beaver County here:  
<https://www.beavercountypa.gov/Pages/History.aspx>

## ECONOMIC HISTORY



Beaver County's economy was built on the area's rich coal reserves and other natural resources in the 1830s (Beaver County, Pennsylvania, n.d.)

Currently, the top employers in Beaver County are oil & gas energy production, healthcare, manufacturing, retail, and local government.

See the top 50 employers in Beaver County here:

<https://www.workstats.dli.pa.gov/Products/CountyProfiles/Pages/default.aspx>

Recent data show that the county's Gross Domestic Product is growing slower than the rest of Pennsylvania, while the number of jobs and citizens within the county are declining (de Place, & Kiick, 2021).

## GOVERNMENT

As a Home Rule state, municipalities in Pennsylvania are allowed to choose what government structure to use.

- **Cities:** Pennsylvania has 9 classes of cities, each classified according to government type and population size (United States Census Bureau, n.d.). Cities can have a variety of different government structures, usually including a mayor and/or a city manager and a city council.
- **Boroughs:** The borough government structure is a weak-mayor structure, where the city council holds the most power in the municipal government.
- **Townships:** There are two township classes. Class 1 townships are governed by a group of commissioners (5-15). Class 2 townships are governed by a group of supervisors (3-5).

## GOVERNMENT

Beaver County has 2 third-class cities which have Commission-style governments, where the mayor is the president of the city council.

Beaver County also has 29 boroughs and 22 townships.

-Read more about local government style in Pennsylvania [here](#)

-Find out what class your municipality is [here](#)

---

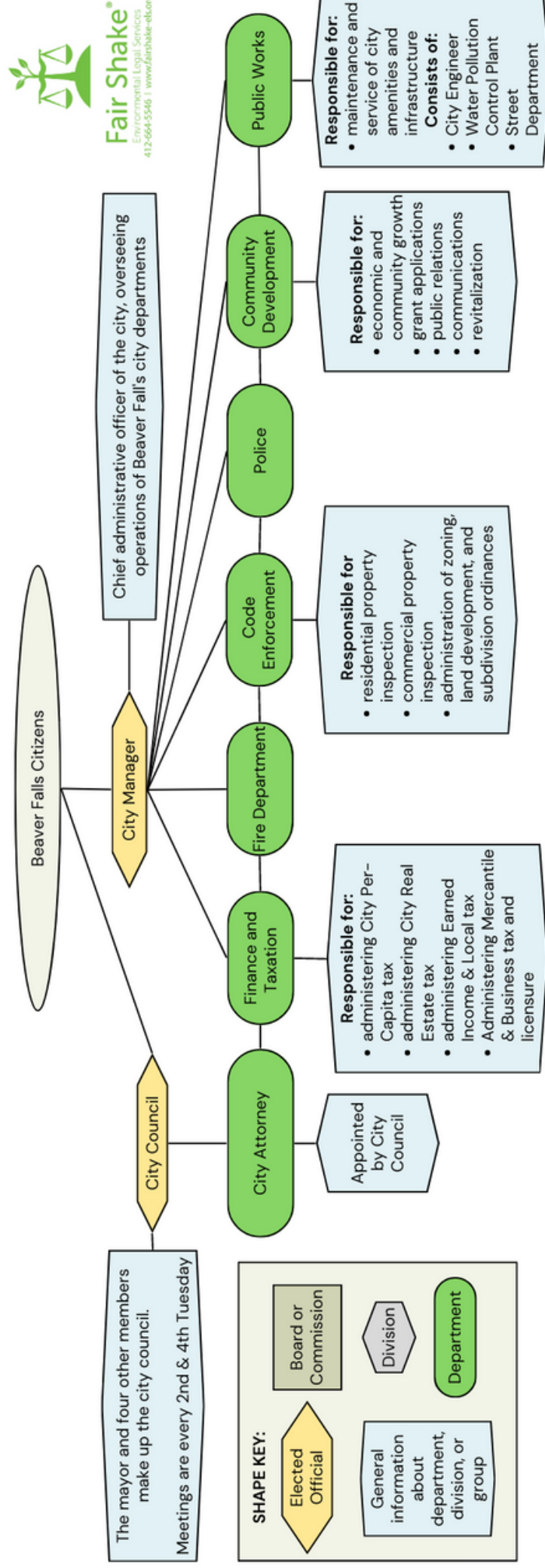
- 1.City of Aliquippa
- 2.City of Beaver Falls

1. Brighton Township
- 2.Center Township
- 3.Chippewa Township
- 4.Darlington Township
- 5.Daugherty Township
- 6.Franklin Township
- 7.Greene Township
- 8.Hanover Township
- 9.Harmony Township
10. Hopewell Township
11. Independence Township
12. Marion Township
13. New Sewickley Township
14. North Sewickley Township
15. Patterson Township
16. Potter Township
17. Pulaski Township
18. Raccoon Township
19. Rochester Township
20. South Beaver Township
21. Vanport Township
22. White Township

- 1.Ambridge Borough
- 2.Baden Borough
- 3.Beaver Borough
- 4.Big Beaver Borough
- 5.Bridgewater Borough
- 6.Conway Borough
- 7.Darlington Borough
- 8.East Rochester Borough
- 9.Eastvale Borough
10. Economy Borough
11. Fallston Borough
12. Frankfort Springs Borough
13. Freedom Borough
14. Georgetown Borough
15. Glasgow Borough
16. Homewood Borough
17. Hookstown Borough
18. Industry Borough
19. Koppel Borough
20. Midland Borough
21. Monaca Borough
22. New Brighton Borough
23. New Galilee Borough
24. Ohioville Borough
25. Patterson Heights Borough

26. Rochester Borough
27. Shippingport Borough
28. South Heights Borough
- 29.West Mayfield Borough

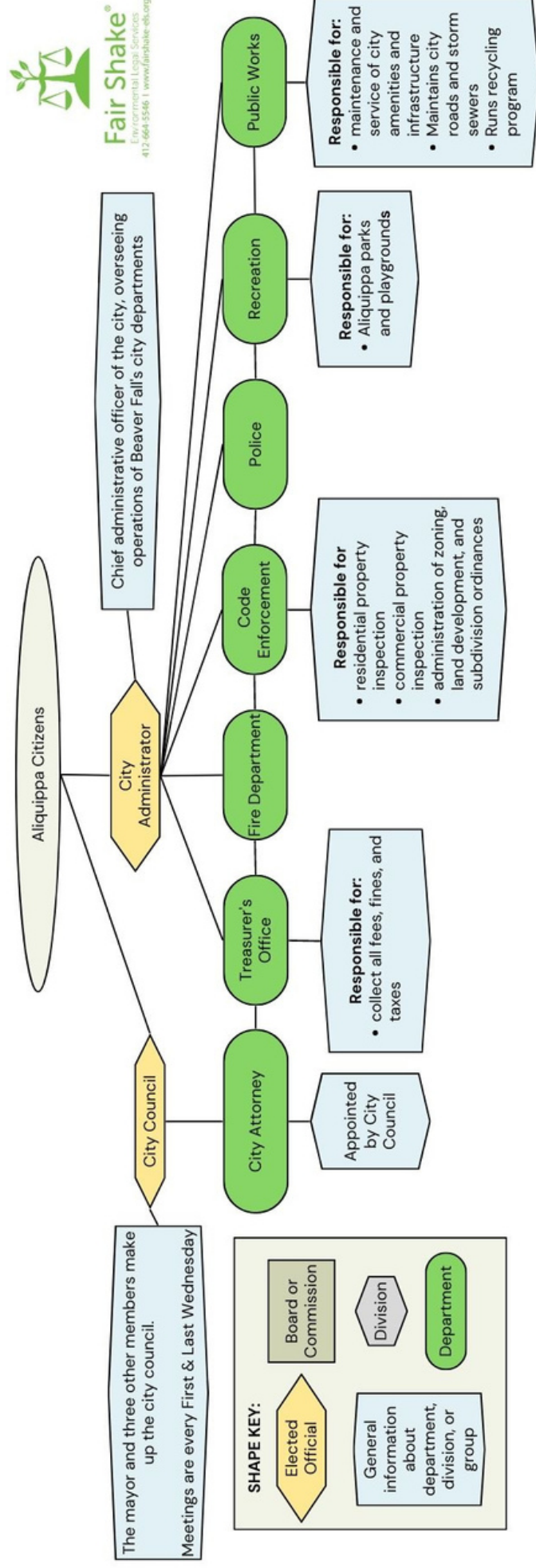
# GOVERNMENT STRUCTURE EXAMPLE: BEAVER FALLS GOVERNMENT ORGANIZATIONAL CHART



This is an example of how a local government in Beaver County functions.



# GOVERNMENT STRUCTURE EXAMPLE: ALIQUIPPA GOVERNMENT ORGANIZATIONAL CHART

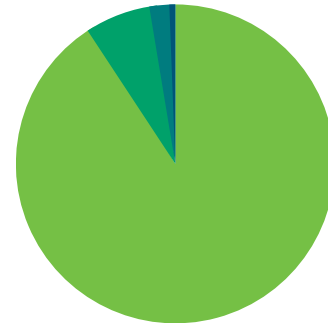


This is an example of how a local government in Aliquippa functions.

# CITIZENS

In 2021, the United States Census Bureau reported that Beaver County has approximately 166,624 residents.

Black or African American  
6.6%



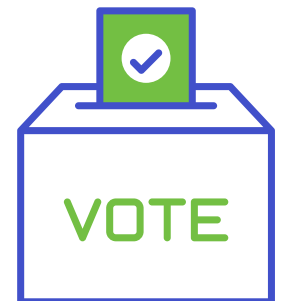
White  
90.7%



The median household income for the whole of Beaver County is ~\$62,152 and around 73.4% of residents own their own home (United States Census Bureau, 2021). However, the median income varies significantly within different communities.

In the most recent local election, approximately 113,834 Beaver County residents were registered to vote.

About 65% of those registered voters cast a ballot on at least one election or issue in November 2022 (Summary Results Report, 2022).



Find out how to register to vote here:  
<https://www.pavoterservices.pa.gov/pages/VoterRegistrationApplication.aspx>



## CITY ATTRACTIONS

Beaver County has many attractions, including:



The Douglas Art Gallery  
<https://visitbeavercounty.com/explore/visualarts/art-galleries/>



The Air Heritage  
 Museum & Aircraft  
 Restoration Facility  
<https://visitbeavercounty.com/explore/museumsandhistory/>

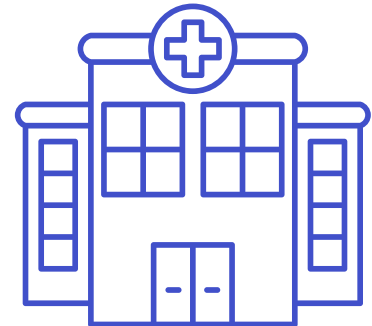


The Beaver Area  
 Heritage Museum  
<https://visitbeavercounty.com/explore/museumsandhistory/>

## LOCAL INFLUENCES

Beaver County has a robust healthcare system including:

- Heritage Valley Hospitals in Beaver & Sewickley
- The Medical Center- Beaver
- The UPMC/HVHS Cancer Center
- The Kindred Hospital at Heritage Valley



There are several colleges and universities in Beaver County:

- Community College of Beaver County
- Geneva College
- Robert Morris University
- Penn State Beaver

Beaver County has a variety of non profit and community organizations including RiverWise, Neighborhood North, and the The Genesis Collective

Contact:

RiverWise: <http://getriverwise.com/contact-us/>

The Genesis Collective: <https://gcollective.org/>

Neighborhood North Museum of Play:  
<https://www.neighborhoodnorth.com/contact-us/>



## ENVIRONMENTAL DATA

The United States Environmental Protection Agency reports that the Beaver County has these environmental issues:

- **Air Pollution:** Beaver County has higher levels of air pollutants that are known to cause health problems than a majority of other Pennsylvania areas, including ozone and Particulate Matter 2.5
- **Lead Paint:** Beaver County has higher levels of lead paint than many other Pennsylvania areas.
- **Wastewater Discharge:** Beaver County has higher levels of wastewater discharge than most other Pennsylvania areas.

### What is Environmental Justice?

*"Environmental justice is based on the reality that certain groups in society bear unequal environmental and economic burdens like poor air and water quality, as well as unhealthy living conditions resulting from industrial, municipal, and commercial operations and/or federal, state, and local laws, regulations, and policies [...] Environmental justice is made possible when all communities have access to information and decision-makers that enable them to take action and create positive change for themselves" (Detroitans Working for Environmental Justice, n.d.).*

Watch this [video](#) to learn more.

### What environmental issues does my community have?

The state environmental data shown above gives a good picture of the environmental issues of the larger area, but communities within the same area can have very different living conditions.

The information and map on the next page show areas of concern within the community and the specific environmental justice burdens those areas face.

# ENVIRONMENTAL JUSTICE CONCERNS

## Beaver Falls

- High Energy Costs
- Asthma
- Diabetes
- Heart Disease
- Low Life Expectancy

## Freedom

- High Energy Costs
- Lead Paint

## Midland

- High Energy Costs
- Asthma
- Lead Paint

## Ambridge

- High Energy Costs
- Asthma
- Historic Underinvestment
- Lead Paint
- Wastewater Discharge

## Aliquippa

- Asthma
- Diabetes
- Heart Disease
- High Housing Costs

## Rochester

- Asthma
- Heart Disease
- Lead Paint



Learn how to find more information about your community [here](#):

## COMMUNITY VISION

Community members in Beaver County have shared with Fair Shake ELS that they are most interested in engaging young people through youth programs, getting access to the river, and gaining skill and job training.

Citizens are also concerned about the air quality in their community due to the ethane cracker plant located in the center of the county.

## COMMUNITY AMBASSADORS

Do you want to learn about how to get involved in your community and make positive change?

Fair Shake Environmental Legal Services is developing a Community Ambassador program to train citizens to become local leaders and engage their community.

Reach out to:  
[sreed@fairshake-els.org](mailto:sreed@fairshake-els.org)  
234-255-0691  
to learn more



# PHOTO CREDITS

Beavery County Map Photo:

[http://www.beavercountypa.gov/Documents/BC\\_Directory\\_2020\\_rev3.pdf](http://www.beavercountypa.gov/Documents/BC_Directory_2020_rev3.pdf)

Jones & Laughlin Corporation Mills Photo:

<https://www.timesonline.com/story/lifestyle/around-town/2015/12/22/histories-mysteries-big-steel-built/18525347007/>

Shell Ethane Cracker Plant Photo:

<https://www.wesa.fm/environment-energy/2022-10-12/an-ethane-cracker-in-western-pa-will-soon-start-up-here-are-answers-to-your-questions-about-it>

Douglas Art Gallery Photo:

<https://visitbeavercounty.com/explore/visualarts/art-galleries/>

Air Heritage Museum & Aircraft Restoration Facility Photo:

<https://visitbeavercounty.com/explore/museumsandhistory/>

Beaver Area Heritage Museum Photo:

<https://visitbeavercounty.com/explore/museumsandhistory/>



## REFERENCES

Beaver County, Pennsylvania (n.d.) *History of Beaver County*. Retrieved January 31, 2023 from <https://www.beavercountypa.gov/Pages/History.aspx>

Clinton, S., Minutolo, M. C., & O'Roark, B. (2021) Updated economic impact analysis: Petrochemical facility in Beaver County, Pennsylvania. *Robert Morris University School of Business*. Retrieved January 31, 2023 from [https://www.rmu.edu/sites/default/files/user\\_files/Project\\_Franklin\\_Economic\\_Impact\\_Study\\_FINAL.pdf](https://www.rmu.edu/sites/default/files/user_files/Project_Franklin_Economic_Impact_Study_FINAL.pdf)

Detroiters Working for Environmental Justice (n.d.) *What is environmental justice?* Retrieved January 31, 2023 from <https://detroitenvironmentaljustice.org/what-is-environmental-justice/>

de Place, E. & Kiick, M. (2021) A cautionary tale of petrochemicals from Pennsylvania. *Ohio River Valley Institute*. Retrieved January 31, 2023 from <https://ohiorivervalleyinstitute.org/wp-content/uploads/2021/11/Beaver-County-Brief-FINAL-11-30.pdf>

United States Census Bureau (n.d.) *Pennsylvania*. Retrieved January 31, 2023 from <https://www2.census.gov/govs/cog/2007/pa.pdf>

United States Census Bureau (n.d.) *Beaver County*. Retrieved January 31, 2023 from <https://www.census.gov/quickfacts/beavercountypennsylvania>

Pennsylvania Department of Labor and Industry (2022) *Beaver County*. Retrieved January 31, 2023 from [https://www.workstats.dli.pa.gov/Documents/Top%2050/Beaver\\_County\\_Top\\_50.pdf](https://www.workstats.dli.pa.gov/Documents/Top%2050/Beaver_County_Top_50.pdf)

Pittsburgh Works Together (n.d.) *Beaver County's economy grew as Shell invested in cracker plant*. Retrieved January 31, 2023 from <https://pghworks.com/beaver-countys-economy-grew-as-shell-invested-in-cracker-plant/>

Summary Results Report (2022) Retrieved January 31, 2023 from <https://beavercountypa.gov/getmedia/d8c60b35-7816-4314-8f39-ec3cb9e13e1d/Official-Results-for-Certification-Precinct-Level-Fall-2022-Results.pdf>